

TM/TAG COURSES

TM (Transfer Module) approved courses (Ohio Transfer 36) are general education courses that are guaranteed to transfer from one Ohio public college or university to another.

TAG approved courses (Transfer Assurance Guide) are discipline-specific courses that fulfill major, minor, or other program requirements at all Ohio public colleges and universities, typically the first year of a bachelor's degree. Some courses are identified as both TM and TAG.

In addition, the Ohio Transfer 36 (TM) is a complete block of general education courses common among the Associate of Arts (AA), Associate of Science (AS), and bachelor's degrees. Therefore, the TM provides students a guaranteed opportunity to transfer courses either on an individual basis or as a block. For more information please contact the Office of K-12 Partnerships at 419-995-8334.



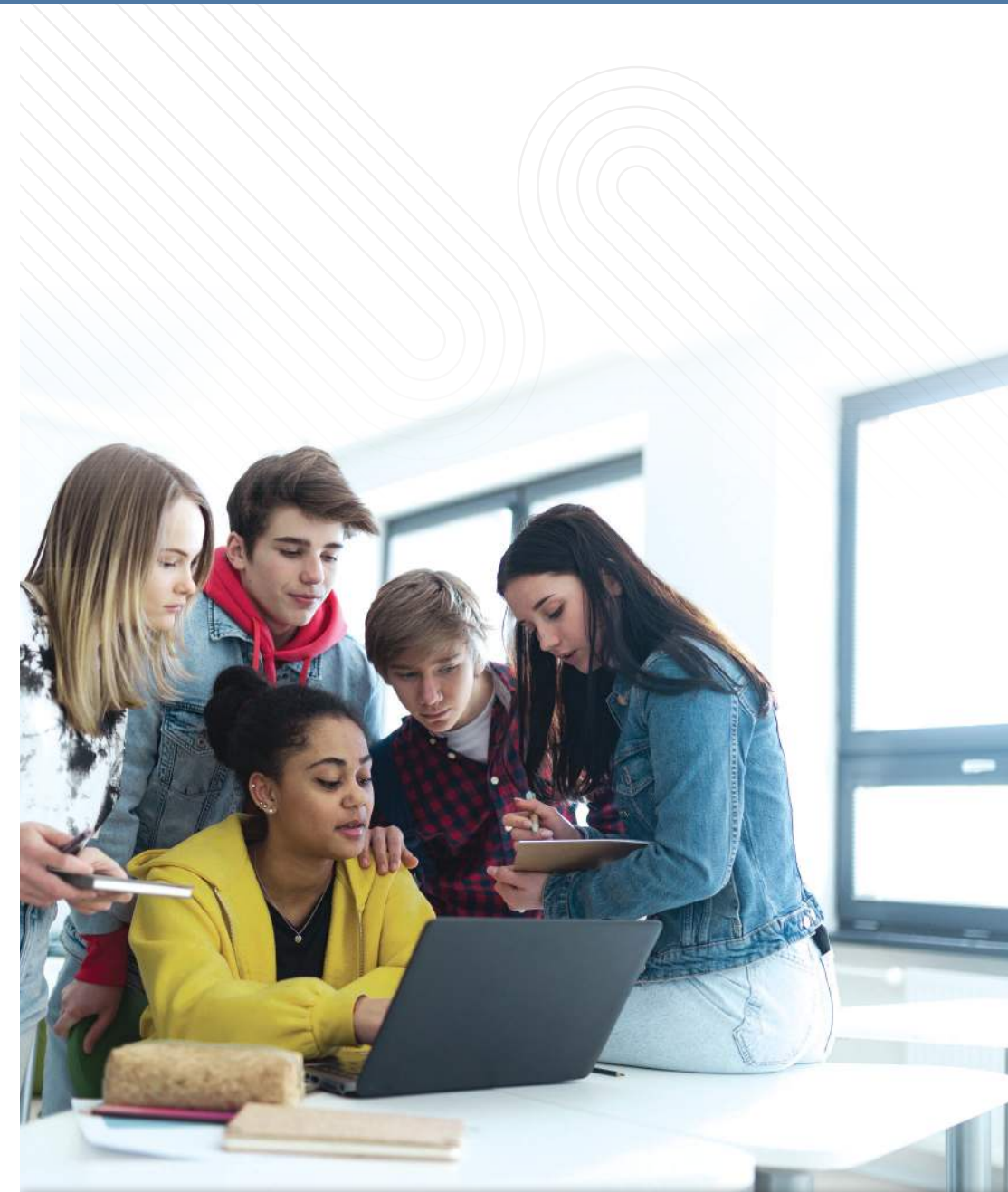
Rhodes State College
4240 Campus Drive
Lima, Ohio 45804
www.RhodesState.edu



COURSE CODE	COURSE NAME	TM	TAG
ACC 1010	Corporate Accounting Principles		▶
ACC 1020	Managerial Accounting Principles		▶
ANT 2411	Cultural Anthropology		▶
ASL 1010	American Sign Language I		▶
ASL 1020	American Sign Language II		▶
BHS 1390	Medical Terminology		
BIO 1000	Basic Human Structure and Function	▶	
BIO 1110	Anatomy and Physiology I	▶	
BIO 1120	Anatomy and Physiology II	▶	
BIO 1210	Biology I	▶	▶
BIO 1220	Biology II	▶	▶
BIO 1400	Microbiology	▶	
BIO 2121	Intro to Human Genetics	▶	
BUS 2100	Business Law		▶
CHM 1110	Introductory General Chemistry	▶	
CHM 1120	Introductory Organic & Biochemistry	▶	
COM 1110	English Composition	▶	
COM 1140	Technical Writing	▶	
COM 1160	Business Communications	▶	▶
COM 1200	Writing in the Sciences	▶	
COM 2110	Public Speaking	▶	▶
COM 2213	Verbal Judo	▶	
COM 2400	Composition and Literature	▶	
COR 2600	Correctional Supervision		▶
DTN 1000	Basic Nutrition		▶
ECN 1410	Macro Economics		▶
ECN 1430	Micro Economics		▶
EDU 1000	Introduction to Education		▶
EDU 1050	Introductory Childhood Development		▶
EDU 2030	Individuals with Exceptionalities		▶
EDU 2130	Families, Communities, and Schools		▶
EET 1110	Circuit Analysis I		▶
EET 1120	Circuit Analysis II		▶
EET 1130	Electronics		▶
EET 1330	Digital Circuits		▶
EET 2310	Microcontroller Fundamentals		▶
EET 2911	Programmable Logic Controllers		▶
GLG 1000	Physical Geology	▶	
GLG 1004	Historical Geology		▶
HST 1011	Western Civilization I	▶	▶
HST 1012	Western Civilization II	▶	▶
HST 1610	American History to 1877	▶	▶
HST 1620	American History Since 1877	▶	▶
HST 2300	Technology and Civilization	▶	
HST 2521	Women in World History	▶	
HUM 1111	Introduction to Social Work		▶
HUM 1212	Social Welfare in the United States		▶
LAW 1130	Introduction to Criminal Justice		▶
LAW 1210	Criminology		▶
LIT 2210	Introduction to Literature	▶	

COURSE CODE	COURSE NAME	TM	TAG
LIT 2215	Native American Literature	▶	
LIT 2227	Literature of Graphic Novels	▶	
LIT 2228	African-American Literature	▶	
LIT 2241	World Literature I	▶	
LIT 2242	World Literature II	▶	
LIT 2250	The American Short Story	▶	
LIT 2260	Fantasy Literature	▶	
LIT 2301	British Literature I	▶	▶
LIT 2310	Literature and the Holocaust	▶	
LIT 2450	Themes in Literature and Film	▶	
MET 1000	Engineering Graphics with AutoCAD		▶
MET 1020	Material Science		▶
MET 1110	Manufacturing Processes		▶
MET 1130	Statics		▶
MET 2210	Strength of Materials		▶
MET 2310	Fluid Mechanics		▶
MET 2440	Computer Aided Design		▶
MGT 1010	Principles of Management		▶
MKT 1010	Principles of Marketing		▶
MTH 1151	Quantitative Reasoning	▶	
MTH 1190	Finite Mathematics/Business	▶	
MTH 1260	Statistics	▶	
MTH 1370	College Algebra	▶	
MTH 1430	Trigonometry	▶	
MTH 1611	Business Calculus	▶	
MTH 1711	Calculus I	▶	
MTH 1721	Calculus II	▶	
MTH 2660	Calculus III	▶	▶
MTH 2670	Differential Equations	▶	▶
MTH 2680	Elementary Linear Algebra	▶	▶
MUS 1010	Music Appreciation I	▶	
PHY 1120	Physics I	▶	▶
PHY 1130	Physics II	▶	▶
POL 1010	Political Science	▶	▶
PSY 1010	General Psychology	▶	▶
PSY 1730	Abnormal Psychology	▶	▶
PSY 2150	Lifespan Psychology	▶	▶
PSY 2200	Social Psychology	▶	▶
PSY 2301	Educational Psychology	▶	▶
SOC 1010	Sociology	▶	▶
SOC 1200	Death and Dying	▶	
SOC 1210	Family Sociology	▶	▶
SOC 1320	American Cultural Diversity	▶	▶
SOC 2211	World Religions: History, Belief, and Practice	▶	
SOC 2300	Social Problems	▶	▶
SPN 1010	Beginning Spanish Course I		▶
SPN 1020	Beginning Spanish Course II		▶
SPN 2010	Intermediate Spanish Course I		▶
SPN 2020	Intermediate Spanish Course II		▶
THR 1010	Theater	▶	

COLLEGE CREDIT PLUS PATHWAYS



Qualifying CCP courses are divided into two levels: ▶ ▶ ▶

Level 1: College Credit Plus students must start with Level 1 courses for their first 15 credits. These are courses for students who haven't completed at least 15 transferable credit hours, courses that apply toward a certificate/pathway/study skills and/or academic success courses, and courses in computer science, info technology, anatomy/physiology, foreign language or American Sign Language.

Level 2: Once students have completed 15 hours of college credit, they can enroll in any course that is not on the 'non-allowable' list. Enrollment in Level Two courses will be based on prerequisites and course availability.



HEALTH SCIENCES

LEVEL 1	COURSE #	COURSE TITLE	CREDIT HOURS
	BIO 1110	Anatomy & Physiology I	4
	BHS 1390	Medical Terminology	2
	COM 1110	English Composition	3
	MTH 1151	Quantitative Reasoning OR	3
	MTH 1260	Statistics OR	
	MTH 1370	College Algebra	4
	SDE 1010	First Year Experience	1
	SOC 1010	Sociology	3
			16/17

LEVEL 2	COURSE #	COURSE TITLE	CREDIT HOURS
	BIO 1120	Anatomy & Physiology II	4
	PSY 1010	Psychology	3
			<i>(last credits split by major below)</i> 30 Credit Hour Pathway

Dental Hygiene Program

BIO 1400	Microbiology	4
DTN 1220	Principles of Nutrition	2

Nursing Program

BHS 2120	Introduction to Nursing Care	2
BIO 1400	Microbiology	4
DTN 1220	Principles of Nutrition	2

Occupational Therapy Assistant Program

BHS 1000	Introduction to Patient Care	2
PSY 1730	Abnormal Psychology	3

Physical Therapist Assistant Program

BHS 1000	Introduction to Patient Care	2
COM 2213	Verbal Judo	3
PSY 2150	Lifespan Psychology	3

Radiographic Imaging Program

BHS 1160	Medical Law-Ethics-Healthcare	2
COM 2213	Verbal Judo	3

Respiratory Care Program

BHS 1000	Introduction to Patient Care	2
BHS 1560	Smoking Cessation Education	1
CHM 1120	Intro Organic & Biochem	4

Surgical Technology Program

BHS 1160	Medical Law- Ethics Healthcare	2
BIO 1400	Microbiology	4
COM 2213	Verbal Judo	3

*See CCP Pathway Advisor for program specific Math requirements.



ADDICTIONS, MENTAL HEALTH, AND SOCIAL WORK ASSISTANT

LEVEL 1	COURSE #	COURSE TITLE	CREDIT HOURS
	SDE 1010	First Year Experience	1
	COM 1110	English Composition	3
	SOC 1010	Sociology	3
	HUM 1111	Introduction to Social Work	3
	MTH 1151	Quantitative Reasoning	3
	PSY 1010	Psychology	3
	COM 2110	Public Speaking or COM 2213 Verbal Judo	3
			19

LEVEL 2	COURSE #	COURSE TITLE	CREDIT HOURS
	HST 1620	American History Since 1877	3
	HUM 2030	Criminal Minds	3
	HUM 2400	Crisis Management	3
	PSY 1730	Abnormal Psychology	3
	PSY 2150	Lifespan Psychology	3
			15

34 Credit Hour Pathway



AGRICULTURE TECHNOLOGY

LEVEL 1	COURSE #	COURSE TITLE	CREDIT HOURS
	SDE 1010	First Year Experience	1
	COM 1110	English Composition	3
	SOC 1010	Sociology	3
	AGR 1000	Introduction to Agriculture	3
	CHM 1110	Introductory General Chemistry	4
	MTH 1370	College Algebra	4
			18

LEVEL 2	COURSE #	COURSE TITLE	CREDIT HOURS
	BIO 1310	Environmental Science	3
	AGR 1200	Sustainable Agriculture	3
			6

24 Credit Hour Pathway

*Agriculture Business, Prescription Mapping, or Agriculture Robotics and Intelligence Track Courses for a 30 Credit Hour Pathway



ASSOCIATE OF ARTS/ASSOCIATE OF SCIENCE (TRANSFER PATHWAY)

LEVEL 1	COURSE #	COURSE TITLE	CREDIT HOURS
	COM 1110	English Composition	3
	SDE 1010	First Year Experience	1
	TM	Any TM Arts & Humanities Course*	3
	TM	Any TM Social & Behavioral Sciences*	3
	TM	Any TM Phys & Bio Sciences/Lab	4
			14

COM 2400	Composition & Literature	3	
MTH	Any TM Mathematics Course	3-5	
TM	Any TM Arts & Humanities Course	3	
TM	Any TM Social & Behavioral Sciences	3	
TM	Any TM Natural Sciences Course w/Lab	4	
			14

29-32 Credit Hour Pathway

*Must select courses from two different subject areas.



BUSINESS

LEVEL 1	COURSE #	COURSE TITLE	CREDIT HOURS
	COM 1110	English Composition	3
	COM 1160	Business Communications	3
	ECN 1430	Micro Economics	3
	MGT 1010	Principles of Management	3
	MTH 1260	Statistics OR	3
	MTH 1370	College Algebra	4
	SDE 1010	First Year Experience	1
			16/17

LEVEL 2	COURSE #	COURSE TITLE	CREDIT HOURS
	ACC 1010	Corp. Accounting Principles	4
	ECN 1410	Macro Economics	3
	MKT 1010	Principles of Marketing	3
	PSY 1010	Psychology OR	3
	SOC 1010	Sociology	3
	TM	Any TM Arts or Humanities Course	3
			19

32-33 Credit Hour Pathway



ENGINEERING TECHNOLOGY

LEVEL 1	COURSE #	COURSE TITLE	CREDIT HOURS
	COM 1110	English Composition	3
	EET 1110	Circuit Analysis I	3
	SOC 1010	Sociology	3
	MTH 1370	College Algebra	4
	PHY 1120	Physics I	4
	MET 1000	Engineering Graphics with AutoCAD	3
			20

LEVEL 2	COURSE #	COURSE TITLE	CREDIT HOURS
	MTH 1430	Trigonometry	3
	PHY 1130	Physics II	4
	FMS 2130	Industrial Robotics	3
	CPT 1120	Introduction to VB Programming	3
			13

33 Credit Hour Pathway



INFORMATION TECHNOLOGY

LEVEL 1	COURSE #	COURSE TITLE	CREDIT HOURS
	SDE 1010	First Year Experience	1
	COM 1110	English Composition	3
	MTH 1260	Statistics OR Quantitative Reasoning (Network Security, Web Program/Computer Programming, or Digital Media)	3
	HST 1620	American History Since 1877	3
	CPT 1050	Technology Basics for the IT Pro	3
			13

LEVEL 2	COURSE #	COURSE TITLE	CREDIT HOURS
	COM 1140	Technical Writing	3
	SOC 1010	Sociology	3
			6

(last 9-11 credits split by major below)

Artificial Intelligence and Machine Learning Program

AIM 1000	Introduction to Artificial Intelligence	3
CPT 1110	Introduction to Programming Logic and Design	3
MTH 1711	Calculus I	5

Network Security

CPT 1411	Microsoft Azure Fundamentals	3
CPT 1416	Microsoft Azure Administrator	3
CPT 1706	Cisco CCNA Introduction to Networks	3
CPT 1716	Cisco CCNA Switching, Routing, and Wireless Essentials	3

Web Programming/Computer Programming

CPT 1120	Intro to VB Programming	3
CPT 1110	Introduction to Programming Logic and Design	3
AIM 1000	Introduction to Artificial Intelligence	3
CPT 1411	Microsoft Azure Fundamentals	3

Digital Media

CPT 1250	Computer Application in the Marketplace	3
CPT 2650	Creating and Editing Digital Images (photoshop)	3
CPT 2670	Graphics Software and Application (illustrator)	3
ECN 1430	Microeconomics	3

30-31 Credit Hour Pathway

* Some Level 2 IT courses can be substituted for Level 1, ask your CCP Pathways Advisor for more information.